

Applications & Features

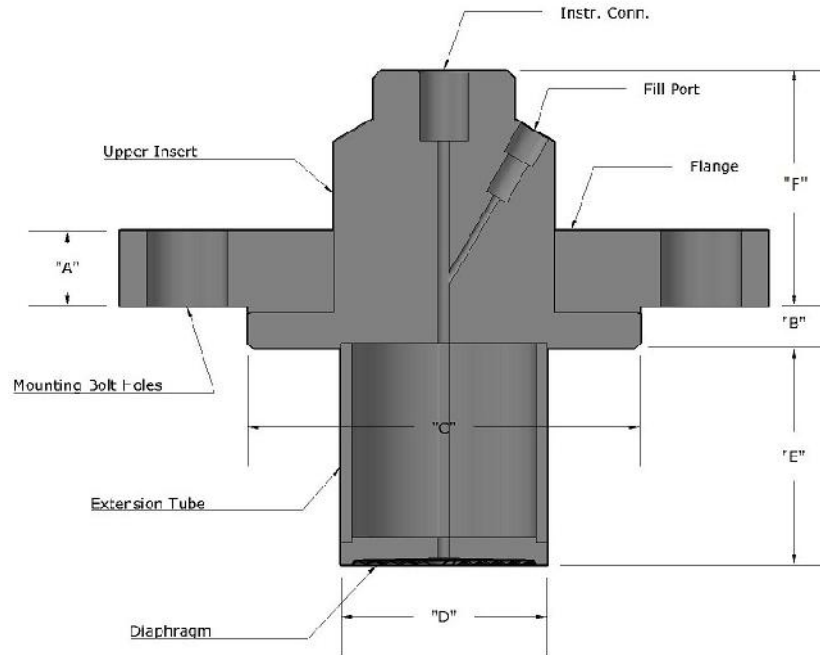
- Flanged Seal with extended diaphragm for Off-line process connection
- Enable flush installation on pipe or heavily insulated tanks.
- Standard flange sizes from ANSI 2" to 4".
- Additional sizes available on request
- Standard flange ratings from ANSI Class 150 to ANSI Class 2500
- Custom extension lengths and diameters are available
- Other flange standards available



Ordering Information

Base Model			
	HFE-	Flanged Extended seal	
Type			
	A	ANSI Raised Face (RF)	
	R	ANSI RING Joint (RTJ)	
	D	DIN (RF) EN1092-1	
Inst. Connection			
	W	Weld Connection	(Not available with Titanium or Zirconium)
	2	1/4" NPT	
	4	1/2" NPT	
Upper Insert			
	S6	316 / 316LSS	
	TI	Titanium	(Required with Titanium wetted materials)
	Z7	Zirconium 702	(Required with Zirconium wetted materials)
Process Connection Size			
	20	2.0"	1.90" Ext, Diameter Standard
	30	3.0"	2.80" Ext, Diameter Standard
	40	4.0"	3.70" Ext. Diameter Standard
	C0	DN50	
	D0	DN80	
	E0	DN100	
	F0	DN125	
Process Connection Rating			
	A	150#	
	B	300#	
	C	600#	
	D	900#	
	E	1500#	
	F	2500#	
	G	PN 10/40	Use with DN25, DN40, DN50
	H	PN 10/16	Use with DN80, DN100, DN125
	J	PN 25/40	Use with DN80, DN100, DN125
	K	PN 63/100	Use with DN25, DN40
	L	PN 63	Use with DN50, DN80, DN100, DN125
	M	PN 100	Use with DN50, DN80, DN100, DN125

Flange Material		
	S6	316/316L
	CS	Carbon Steel
Extension / Wetted Material		
	S6	316 / 316LSS
	S4	304 / 304LSS
	C2	Alloy 20
	HC	Alloy C-276
	HB	Alloy B-3
	M4	Alloy 400
	I6	Alloy 600
	DP	Alloy 2205
	NI	Nickel 201 /200
	TI	Titanium
	Z7	Zirconium 702
Extension Length		
	020	2.00 Inch
	040	4.00 Inch
	060	6.00 Inch
	080	8.00 Inch
	XXX	Length as specified
Diaphragm Material		
	S6	316 / 316LSS
	S4	304 / 304LSS
	TA	Tantalum
	C2	Alloy 20
	HC	Alloy C-276
	HB	Alloy B-3
	M4	Monel 400
	I6	Alloy 600
	DP	Alloy 2205
	NI	Nickel 201 /200
	TI	Titanium (Titanium wetted part required)
	Z7	Zirconium 702 (Zirconium wetted parts required)
Options		
	/AU	Gold Plated Diaphragm
	/NS	PTFE Coated Diaphragm (Non-Stick Only - Not for corrosion protection)
	/SD	Special extension Diameter as specified
	/MC	Material cert w/ MTR's



HFE – Standard Seal Dimensions

ANSI Flange Size	Diaph. Diameter	Type	"A"	Flange Diameter	"B"	"C"	"D"	"E"	"F"	Bolt Qty., Hole Diameter, Bolt Circle Diameter
2"-150#	1.9"	RF	0.75"	6.00"	0.33"	3.62"	1.9"	Order Specific	2.23"	(4X), 0.75 ϕ , 4.75 ϕ b.c.
3"-150#	2.8"	RF	0.94"	7.50"	0.33"	5.00"	2.8"	Order Specific	2.23"	(4X), 0.75 ϕ , 6.00 ϕ b.c.
4"-150#	3.5"	RF	0.94"	9.00"	0.33"	6.19"	3.7"	Order Specific	2.23"	(8X), 0.75 ϕ , 7.50 ϕ b.c.
2"-300#	1.9"	RF	0.88"	6.50"	0.33"	3.62"	1.9"	Order Specific	2.23"	(8X), 0.75 ϕ , 5.00 ϕ b.c.
3"-300#	2.8"	RF	1.12"	8.25"	0.33"	5.00"	2.8"	Order Specific	2.23"	(8X), 0.88 ϕ , 6.62 ϕ b.c.
4"-300#	3.5"	RF	1.25"	10.00"	0.33"	6.19"	3.7"	Order Specific	2.23"	(8X), 0.88 ϕ , 7.88 ϕ b.c.
2"-600#	1.9"	RF	1.25"	6.50"	0.33"	3.62"	1.9"	Order Specific	2.23"	(8X), 0.75 ϕ , 5.00 ϕ b.c.
3"-600#	2.8"	RF	1.50"	8.25"	0.33"	5.00"	2.8"	Order Specific	2.23"	(8X), 0.88 ϕ , 6.62 ϕ b.c.
4"-600#	3.5"	RF	1.75"	10.75"	0.33"	6.19"	3.7"	Order Specific	2.23"	(8X), 1.00 ϕ , 8.50 ϕ b.c.
2"-900#	1.9"	RF	1.75"	8.50"	0.33"	3.62"	1.9"	Order Specific	2.23"	(8X), 1.00 ϕ , 6.50 ϕ b.c.
3"-900#	2.8"	RF	1.75"	9.50"	0.33"	5.00"	2.8"	Order Specific	2.23"	(8X), 1.00 ϕ , 7.50 ϕ b.c.
4"-900#	3.5"	RF	2.00"	11.50"	0.33"	6.19"	3.7"	Order Specific	2.66"	(8X), 1.25 ϕ , 9.25 ϕ b.c.
2"-1500#	1.9"	RF	1.75"	8.50"	0.33"	3.62"	1.9"	Order Specific	2.23"	(8X), 1.00 ϕ , 6.50 ϕ b.c.
3"-1500#	2.8"	RF	2.13"	10.50"	0.33"	5.00"	2.8"	Order Specific	2.66"	(8X), 1.25 ϕ , 8.00 ϕ b.c.
4"-1500#	3.5"	RF	2.38"	12.25"	0.33"	6.19"	3.7"	Order Specific	3.31"	(8X), 1.38 ϕ , 9.50 ϕ b.c.
2"-2500#	1.9"	RF	2.25"	9.25"	0.33"	3.62"	1.9"	Order Specific	2.66"	(8X), 1.12 ϕ , 6.75 ϕ b.c.
3"-2500#	2.8"	RF	2.87"	12.00"	0.33"	5.00"	2.8"	Order Specific	3.31"	(8X), 1.38 ϕ , 9.00 ϕ b.c.

Additional flange standards and custom extension lengths and dimensions available on request. Consult Factory