

Applications & Features

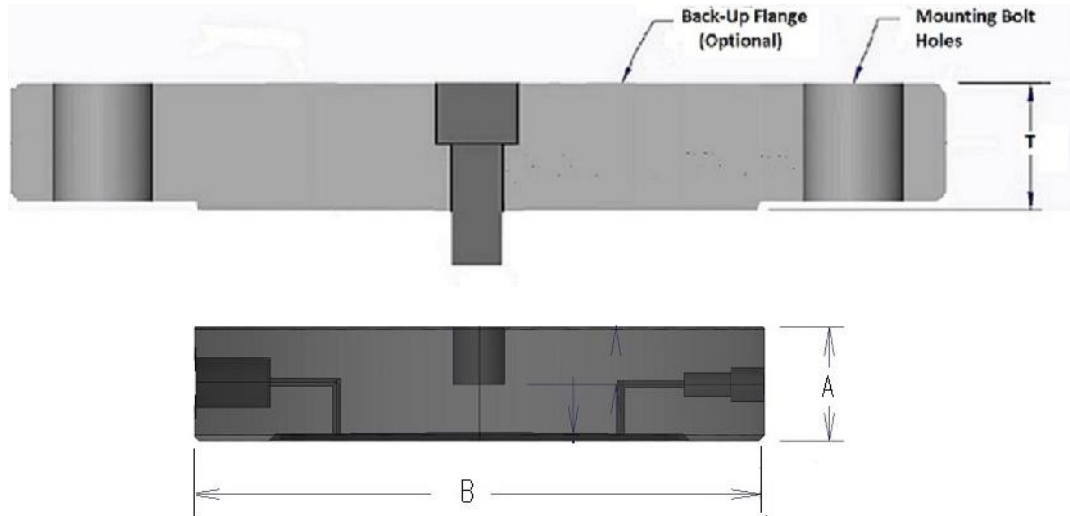
- Flanged Wafer/Pancake Seal with flush diaphragm for off-line process connection
- Standard flange sizes from ANSI 2" to 4". Additional sizes available on request
- Standard flange ratings from ANSI Class 150 to ANSI Class 2500
- Sold with or without the flange
- Other flange standards available



Ordering Information

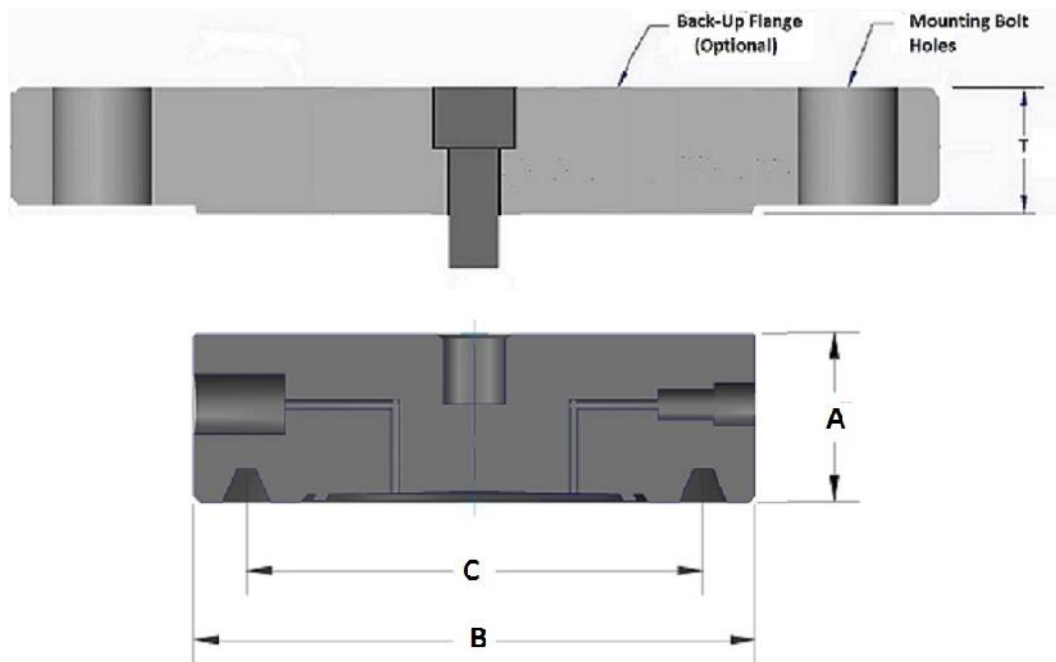
Base Model			
	HFP-	Flanged Pancake Seal	
Type			
	A	ANSI Raised Face (RF)	
	R	ANSI RING Joint (RTJ)	
	D	DIN (RF) EN1092-1	
Inst. Connection			
	W	Weld Connection (Not available with Titanium or Zirconium)	
	2	1/4" NPT	
Process Connection Size			
	20	2.0"	
	30	3.0"	
	40	4.0"	
	C0	DN50	
	D0	DN80	
	E0	DN100	
	F0	DN125	
Process Connection Rating			
	N	Backup flange not required	
	A	150#	
	B	300#	
	C	600#	
	D	900#	
	E	1500#	
	F	2500#	
	G	PN 10/40	DN50
	H	PN 10/16	DN80, DN100, DN125
	J	PN 25/40	DN80, DN100, DN125
	L	PN 63	DN50, DN80, DN100, DN125
	M	PN 100	DN50, DN80, DN100, DN125
	P	PN 160	DN50, DN80, DN100, DN125
	R	PN 250	DN50, DN80, DN100, DN125
Body Material			
	S6	316 / 316LSS	(Standard)
	TI	Titanium	(required for Titanium diaphragm)
	Z7	Zirconium 702	(required for Zirconium 702 diaphragm)

Diaphragm / Wetted Material		
	S6	316 / 316LSS
	S4	304 / 304LSS
	TA	Tantalum
..	C2	Alloy 20
	HC	Alloy C-276
	HB	Alloy B-3
	M4	Monel 400
	I6	Alloy 600
	DP	Alloy 2205
	NI	Nickel 200/201
	TI	Titanium (Titanium body required)
	Z7	Zirconium 702 (Zirconium body required)
Backup Flange Material		
	NN	Backup flange not required
	S6	316 / 316LSS
	CS	Carbon Steel
Calibration / Flushing Ring		
	NN	None
	S6	316 / 316LSS
	S4	304 / 304LSS
	C2	Alloy 20
	HC	Alloy C-276
	HB	Alloy B-3
	M4	Monel 400
	I6	Alloy 600
	DP	Alloy 2205
	NI	Nickel 201 /200
	TI	Titanium
	Z7	Zirconium 702
Flushing Connections		
	N	No Flush
	1	Single 1/4" NPTF
	2	Dual 1/4"NPTF
	3	Single 1/2"NPTF
	4	Dual 1/2" NPTF
Options		
	/AU	Gold Plated Diaphragm
	/NS	PTFE Coated Diaphragm (Non-Stick Only - Not for corrosion protection)
	/P1	With single pipe plug for flush port
	/P2	With dual pipe plugs for flush port
	/MC	Material cert with MTR's



HFP ANSI Raised Face Dimensions

Diaphragm Diameter	Flange Size	Bolt Quantity, Bolt Hole ϕ , Bolt Circle ϕ	"T"	Flange Diameter	"A"	"B"
2.4"	2"-150#	(4X), 0.75 ϕ , 4.75 ϕ b.c.	0.75"	6.00"	1.08"	3.62"
2.4"	2"-300#	(8X), 0.75 ϕ , 5.00 ϕ b.c.	0.88"	6.50"	1.08"	3.62"
2.4"	2"-600#	(8X), 0.75 ϕ , 5.00 ϕ b.c.	1.25"	6.50"	1.08"	3.62"
2.4"	2"-900#	(8X), 1.00 ϕ , 6.50 ϕ b.c.	1.75"	8.50"	1.08"	3.62"
2.4"	2"-1500#	(8X), 1.00 ϕ , 6.50 ϕ b.c.	1.75"	8.50"	1.08"	3.62"
2.4"	2"-2500#	(8X), 1.12 ϕ , 6.75 ϕ b.c.	2.25"	9.25"	1.08"	3.62"
3.5"	3"-150#	(4X), 0.75 ϕ , 6.00 ϕ b.c.	0.94"	7.50"	1.08"	5.00"
3.5"	3"-300#	(8X), 0.88 ϕ , 6.62 ϕ b.c.	1.12"	8.25"	1.08"	5.00"
3.5"	3"-600#	(8X), 0.88 ϕ , 6.62 ϕ b.c.	1.50"	8.25"	1.08"	5.00"
3.5"	3"-900#	(8X), 1.00 ϕ , 7.50 ϕ b.c.	1.75"	9.50"	1.08"	5.00"
3.5"	3"-1500#	(8X), 1.25 ϕ , 8.00 ϕ b.c.	2.13"	10.50"	1.08"	5.00"
3.5"	3"-2500#	(8X), 1.38 ϕ , 9.00 ϕ b.c.	2.87"	12.00"	1.08"	5.00"
3.5"	4"-150#	(8X), 0.75 ϕ , 7.50 ϕ b.c.	0.94"	9.00"	1.08"	6.00"
3.5"	4"-300#	(8X), 0.88 ϕ , 7.88 ϕ b.c.	1.25"	10.00"	1.08"	6.00"
3.5"	4"-600#	(8X), 1.00 ϕ , 8.50 ϕ b.c.	1.75"	10.75"	1.08"	6.00"
3.5"	4"-900#	(8X), 1.25 ϕ , 9.25 ϕ b.c.	2.00"	11.50"	1.08"	6.00"



HFP ANSI RTJ Dimensions

Flange Size	Diaphragm Diameter	Bolt Quantity, Bolt Hole ϕ , Bolt Circle ϕ	"T"	Flange Diameter	"A"	"B"	"C"	RTJ Groove #
2"-150#	2.4"	(4X), 0.75 ϕ , 4.75 ϕ b.c.	0.75"	6.00"	1.20"	4.00"	3.25"	R22
3"-150#	3.5"	(4X), 0.75 ϕ , 6.00 ϕ b.c.	0.94"	7.50"	1.20"	5.25"	4.50"	R29
4"-150#	3.5"	(8X), 0.75 ϕ , 7.50 ϕ b.c.	0.94"	9.00"	1.20"	6.75"	5.88"	R36
2"-300#	2.4"	(8X), 0.75 ϕ , 5.00 ϕ b.c.	0.88"	6.50"	1.20"	4.25"	3.25"	R23
3"-300#	3.5"	(8X), 0.88 ϕ , 6.62 ϕ b.c.	1.12"	8.25"	1.26"	5.75"	4.88"	R31
4"-300#	3.5"	(8X), 0.88 ϕ , 7.88 ϕ b.c.	1.25"	10.00"	1.20"	6.88"	5.88"	R37
2"-600#	2.4"	(8X), 0.75 ϕ , 5.00 ϕ b.c.	1.25"	6.50"	1.26"	4.25"	3.25"	R23
3"-600#	3.5"	(8X), 0.88 ϕ , 6.62 ϕ b.c.	1.50"	8.25"	1.26"	5.75"	4.88"	R31
4"-600#	3.5"	(8X), 1.00 ϕ , 8.50 ϕ b.c.	1.75"	10.75"	1.26"	6.88"	5.88"	R57
2"-900#	2.4"	(8X), 1.00 ϕ , 6.50 ϕ b.c.	1.75"	8.50"	1.20"	4.88"	3.75"	R24
3"-900#	3.5"	(8X), 1.00 ϕ , 7.50 ϕ b.c.	1.75"	9.50"	1.26"	6.00"	4.88"	R31
4"-900#	3.5"	(8X), 1.25 ϕ , 9.25 ϕ b.c.	2.00"	11.50"	1.26"	7.00"	5.88"	R37
2"-1500#	2.4"	(8X), 1.00 ϕ , 6.50 ϕ b.c.	1.75"	8.50"	1.20"	4.88"	3.75"	R24
3"-1500#	3.5"	(8X), 1.25 ϕ , 8.00 ϕ b.c.	2.13"	10.50"	1.26"	6.62"	5.38"	R35
4"-1500#	3.5"	(8X), 1.38 ϕ , 9.50 ϕ b.c.	2.38"	12.25"	1.26"	7.62"	6.38"	R39
2"-2500#	2.4"	(8X), 1.12 ϕ , 6.75 ϕ b.c.	2.25"	9.25"	1.20"	5.25"	4.00"	R26
3"-2500#	3.5"	(8X), 1.38 ϕ , 9.00 ϕ b.c.	2.87"	12.00"	1.33"	6.50"	5.00"	R32