

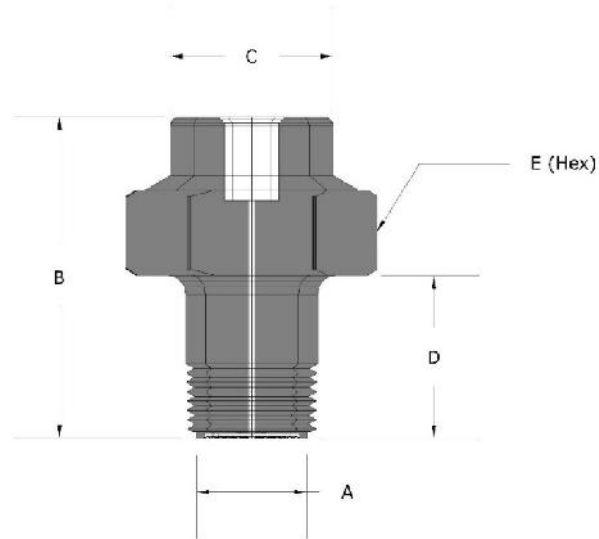
Applications & Features

- Male NPT threaded body with flush diaphragm at the end of threads
- Suitable for pressures up to 9000 PSI depending on size
- Sizes from 3/4" NPT to 2" NPT



Ordering Information

Base Model				
	HFT	Threaded Flush Diaphragm		
Size				
	A	3/4" NPT Flush Male Connection	9000 PSI MWP	316SS
	B	1" NPT Flush Male Connection	9000 PSI MWP	316SS
	C	1-1/2" NPT Flush Male Connection	6000 PSI MWP	316SS
	D	2" NPT Flush Male Connection	4000 PSI MWP	316SS
Instrument Connection				
	W	Weld Connection	(Not available with Titanium or Zirconium)	
	2	1/4" NPT		
	4	1/2" NPT		
Body & Diaphragm Material				
	S6	316 / 316LSS		
	S4	304 / 304LSS		
	C2	Alloy 20		
	HC	Alloy C-276		
	HB	Alloy B-3		
	M4	Monel 400		
	I6	Alloy 600		
	DP	Alloy 2205		
	NI	Nickel 200		
	TI	Titanium		
	Z7	Zirconium 702		
Options				
	/AU	Gold Plated diaphragm		
	/NS	PTFE Coated Diaphragm	(Non-Stick Only - Not for corrosion protection)	
	/MC	Material cert with MTR's		



HFT Dimensions

Size	"A" Diaph. Size	"B"	"C"	"D"	"E" Hex Size
¾" NPTM	0.88"	2.16"	1.30"	1.25"	1.75"
1" NPTM	1.16"	2.16"	1.30"	1.25"	1.75"
1.5" NPTM	1.75"	2.70"	1.30"	1.25"	2.50"
2" NPTM	2.08"	2.70"	1.30"	1.25"	2.50"