

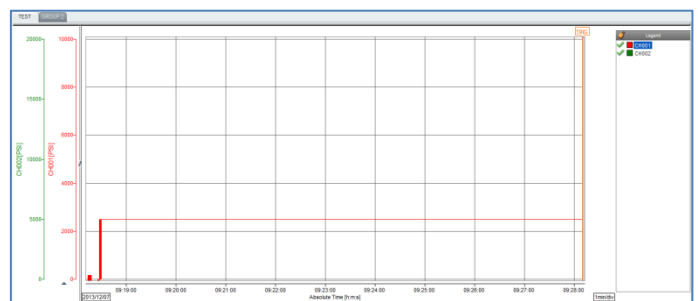
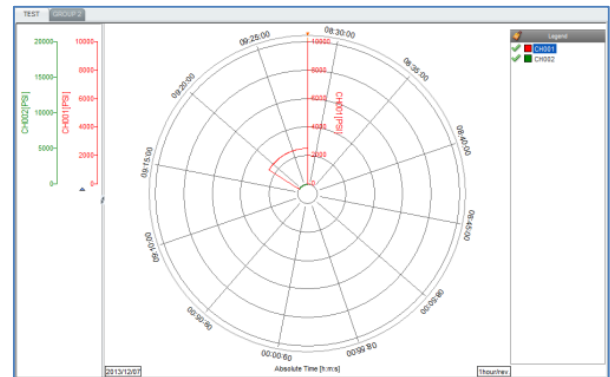
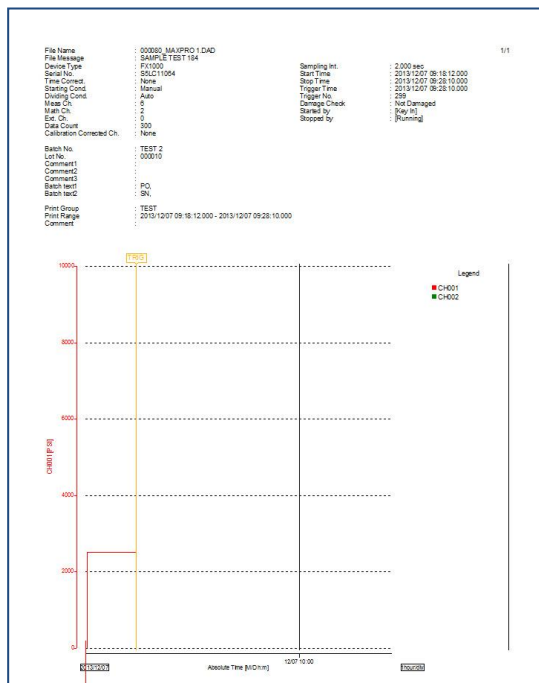
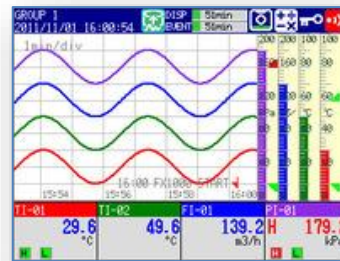
Multi Channel Data Logger

Available in Panel Mount or Portable
State of the art Data Logging supported with YOKOGAWA Technology
5.7-inch color TFT LCD Screen
Easy Operation
Reliable Data Storage
Multi-Channel
Pressure Ranges up to 100,000 Psi
USB and Ethernet Connections



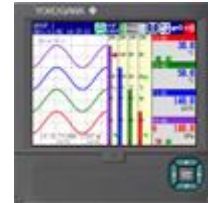
Standard Features:

Remote Viewing through the Internet
Multi-Function panel keys
Multiple Pressure Sensor or Temperature Input
Zero button for pressure sensor re-zero
50' cable per pressure sensor
High accuracy up to 0.05% of reading
110 VAC Powered
USB Input (USB Drive Supplied) and Ethernet Port
Message and alarm input and recordings at console
User input settings
Water and Dustproof
Military Grade Connections
PC Viewer Software Supplied for Viewing Data Files, Graphs, and Printing Reports



Data Logger Features:

- **Intuitive display, easy operation**
 - **5.7-inch, high-precision, wide-viewing-angle color TFT LCD**
 - **Many types of displays such as trend, digital, bar graph, overview, alarm, and historical trend**
 - **Remote viewing of the screen through the Internet**
 - **Multi-functional panel keys**
 - **Start/stop recording by batch, and create data files**
- **Comprehensive selection of measurement types, and exceptional performance**
 - **Input types: Pressure Sensor, DCV, TC, RTD, DI**
 - **Scan interval: 1 s, 125 ms (fast sampling) (Standard Version 1s scan interval)**
 - **Channels: 2, 4, 6, 8, 10, 12 (Standard Version Max 6 channels)**
 - **Measurement accuracy: $\pm 0.05\%$ of reading**
- **Reliable data storage**
 - **Large (400 MB) internal memory**
 - **CF cards up to 2 GB (option)**
 - **USB interface**
 - **Binary data storage**
 - **Network enables data redundancy**
- **Reliable design and construction**
 - **Space-saving design**
 - **Waterproof and dustproof (IP65 compliant)**

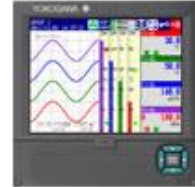


Optional Features:

- **Additional 6 inputs**
- **Touchscreen**
- **Custom Ethernet Support and Setup**
- **Custom Report Design**

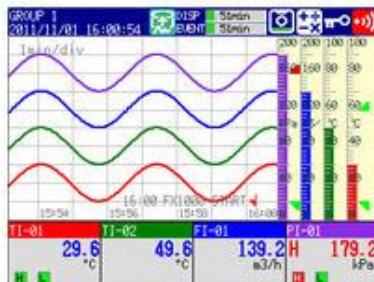
Intuitive Display, Easy Operation

- 5.7-inch, high-precision, wideviewing-angle color TFT LCD
- Many types of displays such as trend, digital, bar graph, overview, alarm, and historical trend
- Remote viewing of the FX1000 screen through the Internet
- Multi-functional panel keys



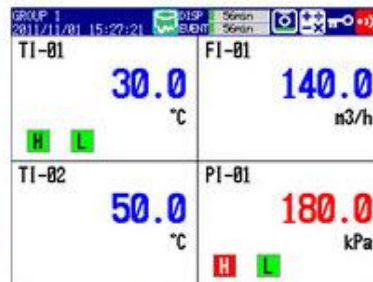
Monitor display

You can use the keys to switch to any of the operation screens. The operating states of memory sampling, alarms, key lock, computation, and other conditions are graphically displayed. Supports Chinese, English, German, French, and Japanese.



Trend display

Displays measured data as waveforms. Displays each channel's scale value, industrial units, user messages, and other information.



Digital display

In addition to displaying measurements digitally, it displays channel/tag, industrial units, and alarm statuses.



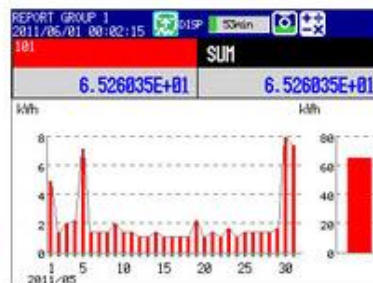
Overview display

Displays measurements and alarm statuses on all channels.



Trend display (log scale)

You can display log scales for degree of vacuum (pressure input), and record the data (option).



Stacked bar graph

You can display and record power consumption of each piece of electronic equipment; useful for energy saving and equipment maintenance as part of environmental protection programs (option).

Intuitive operator controls

The DISP/ENTER and arrow keys provide display mode and setting menu navigation. Clearly labeled menu, function, and record start/stop keys handle all setting and control operations.



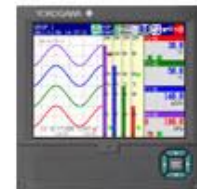
IE browser monitor screen

FX screen monitoring and operation is made easy via Ethernet.



Reliable Data Storage

- Large (400 MB) internal memory
- CF cards up to 2 GB (option)
- USB interface (option)
- Binary data storage
- Network enables data redundancy

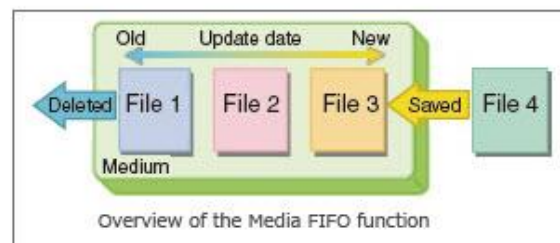


High capacity internal memory

Standard 400 MB non-volatile flash memory for secure, long term recording

Media FIFO function

This function ensures that the CF card always retains the latest data when files are saved to it automatically. When the CF card is full, the oldest files are deleted to make room for the newest files. The media FIFO function allows you to use the FX continuously for long periods of time without having to change the CF card.



Ordering Information

Model

Code **Type**
 HIEFX1000 Data Logger

Code **Display**
 S Standard 5.7-inch LCD Color Screen (Non Touch) with pushbuttons
 T Full 5.7-inch LCD Touch Screen

Code **Mounting Style**
 F Field mount/Panel/Wall
 P Portable Case

Code **Input 1**
 -## (See Table A)

Code **Input 2**
 -## (See Table A)

Code **Input 3**
 -## (See Table A)

Code **Input 4**
 -## (See Table A)

Code **Input 5**
 -## (See Table A)

Code **Input 6**
 -## (See Table A)

OPTIONS:

Code

- /K External Full Size Keyboard with USB input
- /C1 Custom Viewing Software Package
- /U Additional 8 GB USB Storage Disk
- /Add# Additional input (use if more than 6) Use code from table A in place of “#” for each input

TABLE A – Input Code

Code	Input	Code	Input
NN	None	15	Pressure Sensor 15000 Psi Max
TE	RTD Temperature	20	Pressure Sensor 20000 Psi Max
01	Pressure Sensor 1000 Psi Max	30	Pressure Sensor 30000 Psi Max
05	Pressure Sensor 5000 Psi Max	50	Pressure Sensor 75000 Psi Max
10	Pressure Sensor 10000 Psi Max	11	Pressure Sensor 100000 Psi Max
		SS	Special Input (Contact Factory)