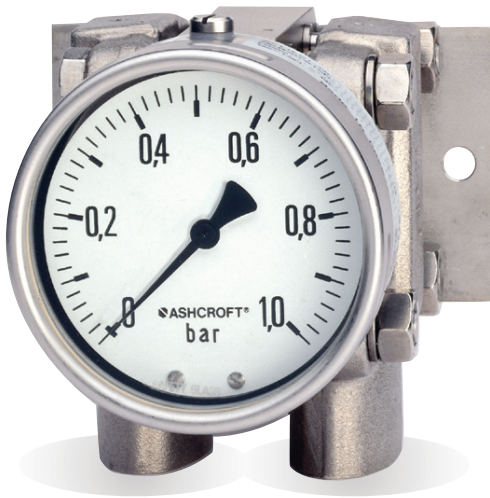


## Type 5503 Differential Pressure Gauge



- $\pm 1.6\%$  full scale accuracy
- SS case
- Nace compliant option
- Available with custom flow monitoring dials
- 1,450 psi static pressure standard with optional static pressure to 5,801 psi
- External zero adjust
- Optional liquid-filled case
- 4" (100mm) or 6" (160mm) dial sizes

The Ashcroft® Type 5503 differential pressure gauge is available with ranges from 10 I.W.D. to 600 psi with optional static pressure to 5,801 psi. Optional wetted parts includes Hastelloy C®. Typical applications include chemical, petrochemical power, food & beverage and the pulp and paper industries.

### PRODUCT SPECIFICATIONS

<b>Model Number:</b>	5503
<b>Accuracy:</b>	$\pm 1.6\%$ full scale
<b>Dial Size:</b>	4" (100mm) or 6" (160mm)
<b>Ranges:</b>	0-30 IWD (inches of water differential) to 300 psid
<b>Static Pressure:</b>	1,450 psi standard Optional 3,625 psi ranges <10 psid 5,801 psi ranges >10 psid
<b>Case Material:</b>	304 SS open front case with a bayonet ring; (316 SS case and ring optional)
<b>Window:</b>	Shatterproof glass
<b>Dial:</b>	White painted aluminum
<b>Pointer:</b>	Black painted aluminum with external adjust feature standard (to 25% of range)

<b>Diaphragm Material:</b>	316 SS steel for ranges of 5 psi and below. High strength cobalt alloy (Duratherm 600®) for ranges of 10 psi and above
<b>Housing Material:</b>	316 SS with a Viton® O-ring
<b>Mounting:</b>	Stem, wall or pipe
<b>Connection Size:</b>	¼, ½ NPT
<b>Purge &amp; Bleed Connection:</b>	Standard on top of each pressure chamber (G ¼ with plug)
<b>Connection Location:</b>	Lower

### OPTIONAL FEATURES

316 SS case and ring	(XYW)
Glycerin fill - Standard	(L)
Silicone fill - Optional	(XGV)
Weather Protection Dry case (IP65)	
Hermetic case (IP66)	(XLJ)
Liquid filled case (IP66)	
Static pressure to 3,625 psi (ranges <10 psid)	(XSP)
5,801 psi (ranges >10 psid)	
Wall mounting bracket	(XFW)
Pipe mounting bracket (Available for ranges 5 psid and above.)	(XTM)
3-way manifold	(X43)
Hastelloy C® diaphragm with 316 SS housing <sup>(1)</sup>	(HS)
Hastelloy C® diaphragm and housing Ranges 60 psid and above NACE compliant	(HH)
Electric Warning Contacts <sup>(2)</sup>	
High and Low	(XED)
Double High	(XEE)
Double Low	(XEF)
Oxygen cleaning	(X6B)

<sup>(1)</sup> Only available with 1,450 psi static pressure.

<sup>(2)</sup> Specify contact arrangement.

Specify if magnetic or inductive contacts.

### Temperature Limits

Process: -4/212°F, (-20-100°C)

Ambient: -4/176°F, (-20-80°C)

Storage: -40/140°F, (-40-60°F)

Viton® is a registered trademark of DuPont Co.

### TYPE 5503 TYPICAL PRODUCT CODING

10		5503		S		S		-		04		L		XNH		100#	
SIZE	TYPE NUMBER	DIAPHRAGM MATERIAL		HOUSING MATERIAL		LIQUID FILL CASE		CONNECTION SIZE		CONNECTION LOCATION		VARIATIONS		RANGE PSID*			
<b>Code</b>	<b>mm</b>	<b>Code</b>	<b>Description</b>	<b>Code</b>	<b>Desc.</b>	<b>Code</b>	<b>Desc.</b>	<b>Code</b>	<b>NPT</b>	<b>Code</b>	<b>Desc.</b>	(NH)	SS Wired Tag	10IW			
(10)	100	(S)	316 SS (ranges 5 psid and below, Duratherm 600® hi strength cobalt alloy for ranges 10 psid	(S)	316 SS	(L)	Optional	(02)	¼	(L)	Lower	(6B)	Oxygen Service	15IW			
(16)	160	(H)	Hastelloy® C	(H)	Hastelloy® C		Liquid Filled Case	(04)	½			(YW)	316 SS Case	30IW			
		(P)	Monel®					(15)	G ½ B Male			(AJ)	Accuracy .5% Upscale	60IW			
								(25)	¼ NPTF			(DA)	Dial Marking	100IW			
								(50)	½ NPTF			(FW)	Wall Mounting Bracket	160IW			
												(TM)	2" Pipe Mounting Bracket	200IW			
												(LJ)	Field Fillable	3			
												(AT)	ATEX Listed	5			
												(C3)	Material Certificate to EN 10204 3.1	10			
												(C4)	Individual Calibration Chart	15			
												(C4)	NACE Compliance*	30			
													*Hastelloy C diaphragm and housing required	60			
														100			
														200			
														300			
														400			
														600			

\*Except where noted below. See datasheet for additional units of measure.

## Type 5503 Differential Pressure Gauge

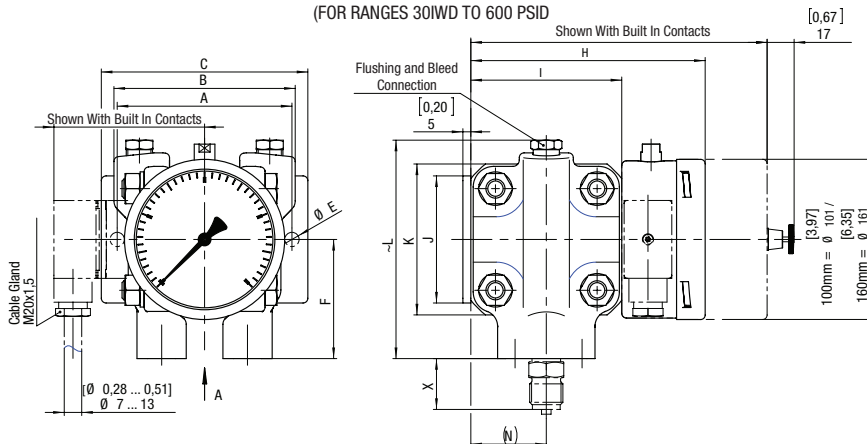
STANDARD RANGE TABLE*			
psid	mBar	bar	I.W.D.
3	40	0.6	10
5	60	1.0	15
10	100	1.6	30
15	160	2.5	60
30	250	4	100
60	400	6	160
100		10	200
160		16	
200		25	
300			
400			
600			

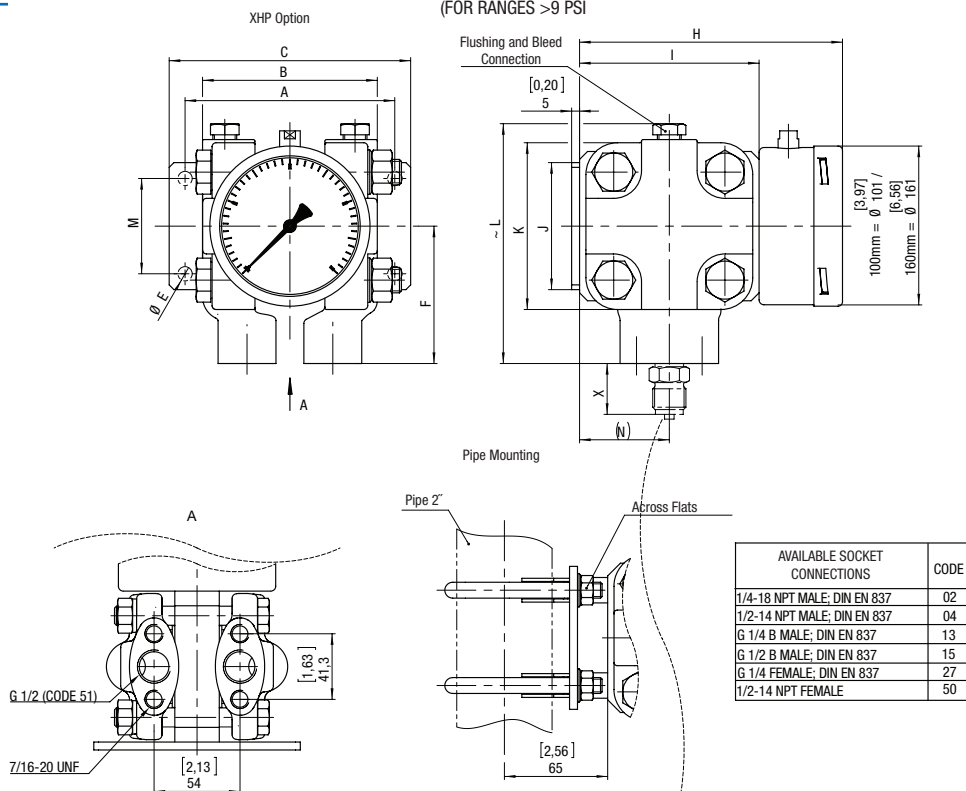
WEIGHT (lbs)		
	100mm	160mm
<b>For ranges ≤5 psid</b>		
Dry	20	21
Liquid Filled	21	22
<b>For ranges ≥10 psid</b>		
Dry	9	10
Liquid Filled	10	11

### DIMENSIONS

FOR MAXIMUM STATIC PRESSURE 1450 PSI  
(FOR RANGES 30IWD TO 600 PSID)



FOR MAXIMUM STATIC PRESSURE 5801 PSI  
(FOR RANGES >9 PSI)



FOR GAUGES WITH STATIC PRESSURE TO	A	B	C	D	E	F	G	H	I	J	K	-L	M	(N)
1,45 psi	[5,20] 132	[4,25] 108	[5,98] 152	[4,72] 120	[0,35] 4 x Ø9	[3,94] 100	[9,43] 239,5	[7,62] 193,5	[5,55] 141	[3,15] 80	[5,55] 141	[7,11] 181	[2,36] 60	[2,78] 70,5
5,801 psi	[5,20] 132	[4,33] 110	[5,98] 152	-	[0,35] 2 x Ø9	[3,41] 86,5	-	[6,52] 165,5	[4,45] 113	[3,15] 80	[4,13] 105	[5,94] 151	-	[2,22] 56,5